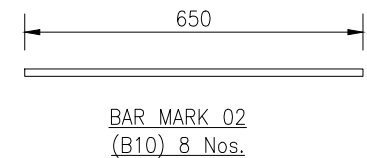
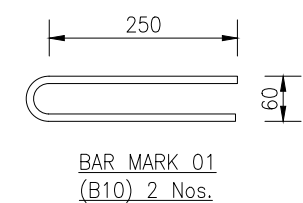
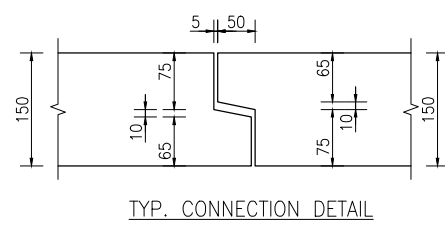
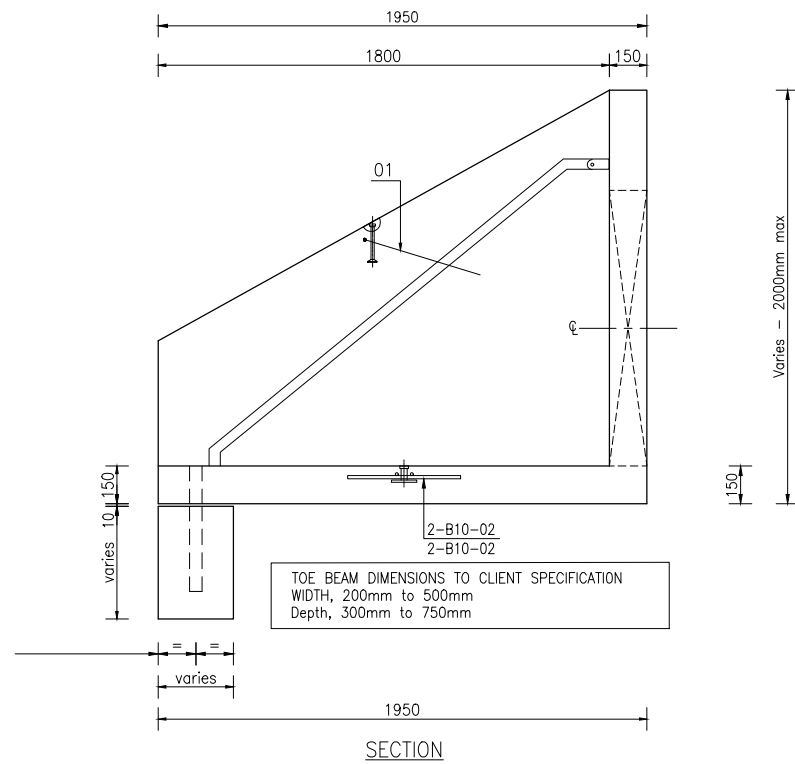
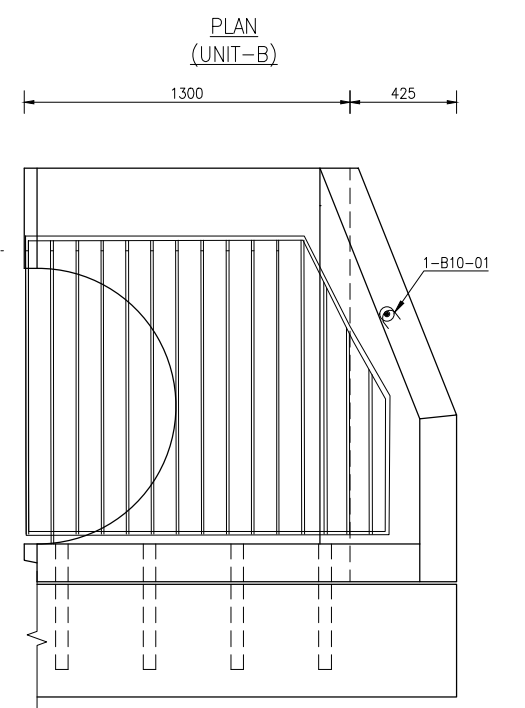
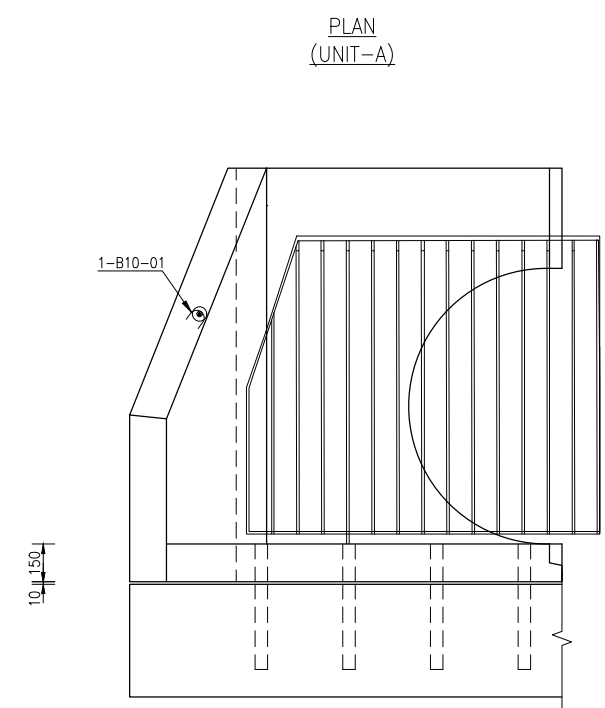
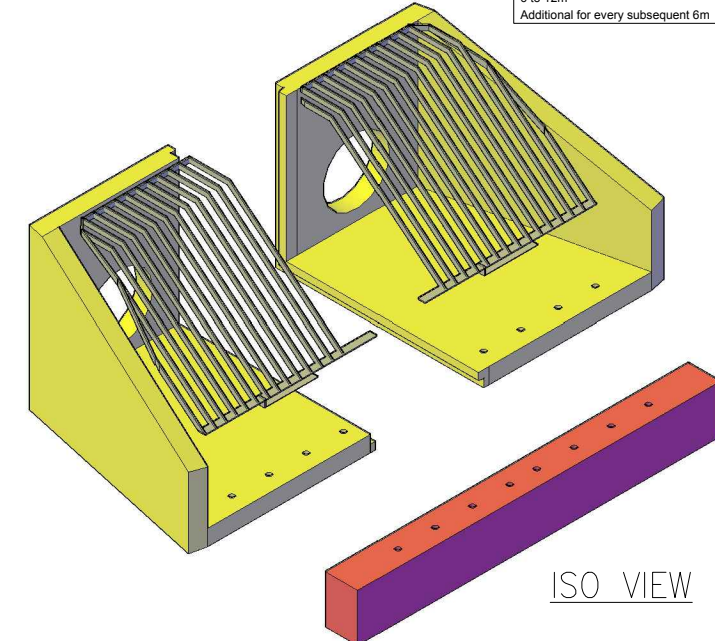
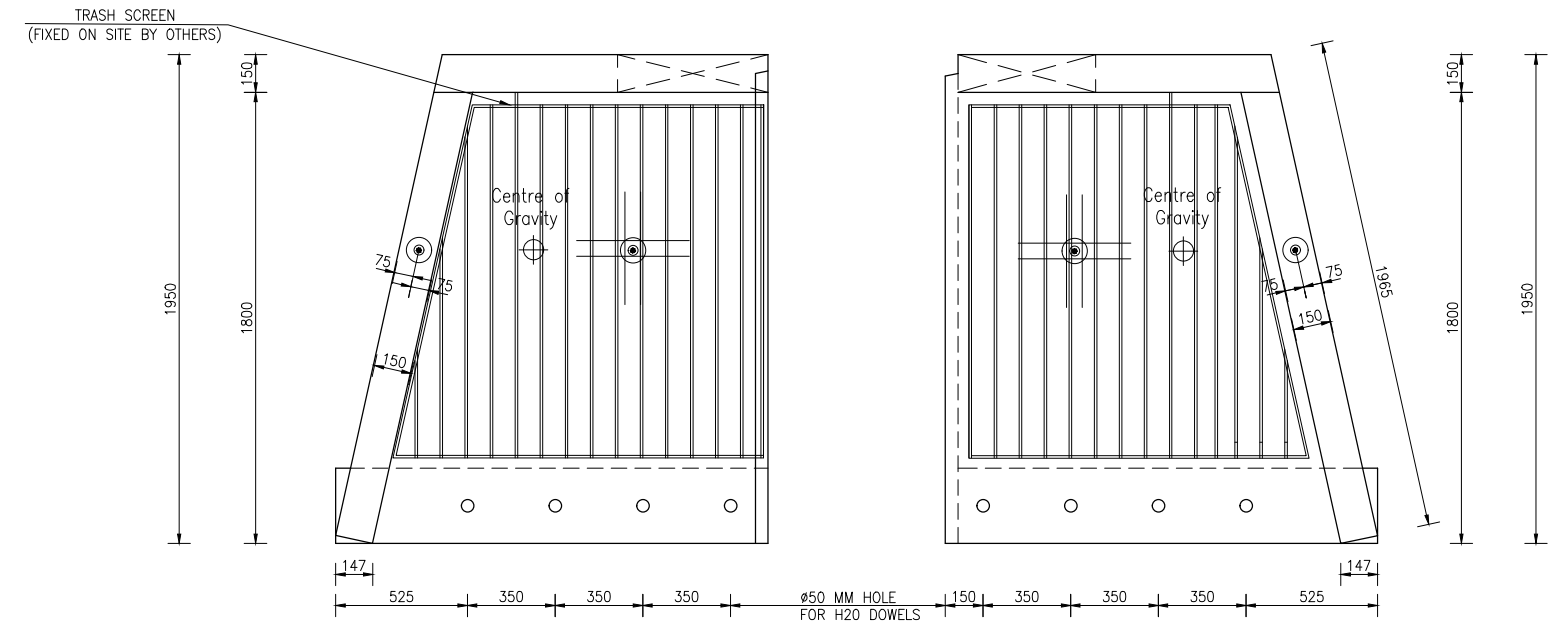


Manufacture Tolerances			
Allowable dimensional variations shall not exceed the following:			
Length	Variation	Cross section	Variation
Up to 3m	± 6mm	Up to 500mm	± 6mm
3 to 4.5m	± 9mm	500 to 750mm	± 9mm
4.5 to 6m	± 12mm	Additional for every subsequent 250mm	± 3mm
Additional for every subsequent 6m	± 6mm		
Straightness or bow (deviation from intended line)		Variation	
Up to 3m		± 6mm	
3 to 6m		± 9mm	
6 to 12m		± 12mm	
Additional for every subsequent 6m		± 6mm	

- NOTES**
- Design & Manufacture:**
 - Designed in accordance with EUROCODES.
 - Manufactured in accordance with Series 1700 Specification for Highway Works.
 - Loading retained soil only.
 - Water level above invert: External = 0 mm Internal = 0 mm
 - SWP have designed the reinforced concrete units only. Stability and soil structure interaction should be checked by the overall scheme designer.
 - No allowance has been made for construction traffic. A design check will only be completed on request.
 - Concrete:**
 - Lifting cube strength = 15 N/mm².
 - Min. Characteristic 28 day cube strength = 50 N/mm².
 - Mix References: SWP/C40/50
 - Design Chemical Class: DC1
 - Reinforcement:**
 - CARES approved, grade B500B conforming to BS 4449:2005. Grade B500C may be used in place of B500B.
 - Scheduling, dimensioning, bending & cutting of steel to BS 8666:2005.
 - Tying wire to be 1.2mm dia. stainless steel.
 - Reinforcement adjusted locally to accommodate lifting anchors.
 - Durability:** (BS 8500)
 - Design Life = 120 years.
 - Exposure Class:

Face	Exposure Class Provided
All	XC3/4, XD2, XF2



REINFORCEMENT: A393 MESH CENTRAL TO ALL SECTIONS (OR EQUIVALENT LOSE BARS)

- Cover to reinforcement:**

Face	Min. Cover	* Max. Cover
All	40mm	50mm

* Max. cover is only applicable to the larger dia. bar on each face.
- Finishes:**

Class	Formed	Unformed
	F1	U1
- Handling:**
 - Lifting points to be as specified below. Use all points for lifting & refer also to the Lifting Instructions diagram.

Unit	Qty	System	CFS Ref.	SWL
	2x1	CFS	T-050-0240	5 T
	2x1	CFS	TPA-050-065	5 T

- The site lifting equipment may be purchased / hired from CFS Ltd. Tel: 01491 576466. Lifting clutches Reference: ???
- All lifting recesses to be filled in by others.
- Unit volume / weight:

Unit	Unit Volume (m ³)	* Unit Weight (assuming 2.5T/m ³)

- Weight for craneage to be checked by main contractor.
- Storage: Units supported on 2 no. bearers at approx. 1/5th points.
- Marking:**
 - Units shall be indelibly marked to show the member mark, cast date, unit weight and either the contract number or name.

UNIT SCHEDULE			
UNIT REF.	NO. REQUIRED		
	1		

STANDARD DETAILS			
LARGE HEADWALLS			
LARGE SFA SWP HEADWALLS WITH TRASH SCREEN			

Drawn By: SGP	Status: FOR INFORMATION
Date: 31.07.2020	
Scale: 1:15	
Checked: MH	

SWP CONCRETE SOLUTIONS LTD

No. SWP_HW_STD_10 0

cm

A1